



The support activities of the CZU in synergy with Technology Centre

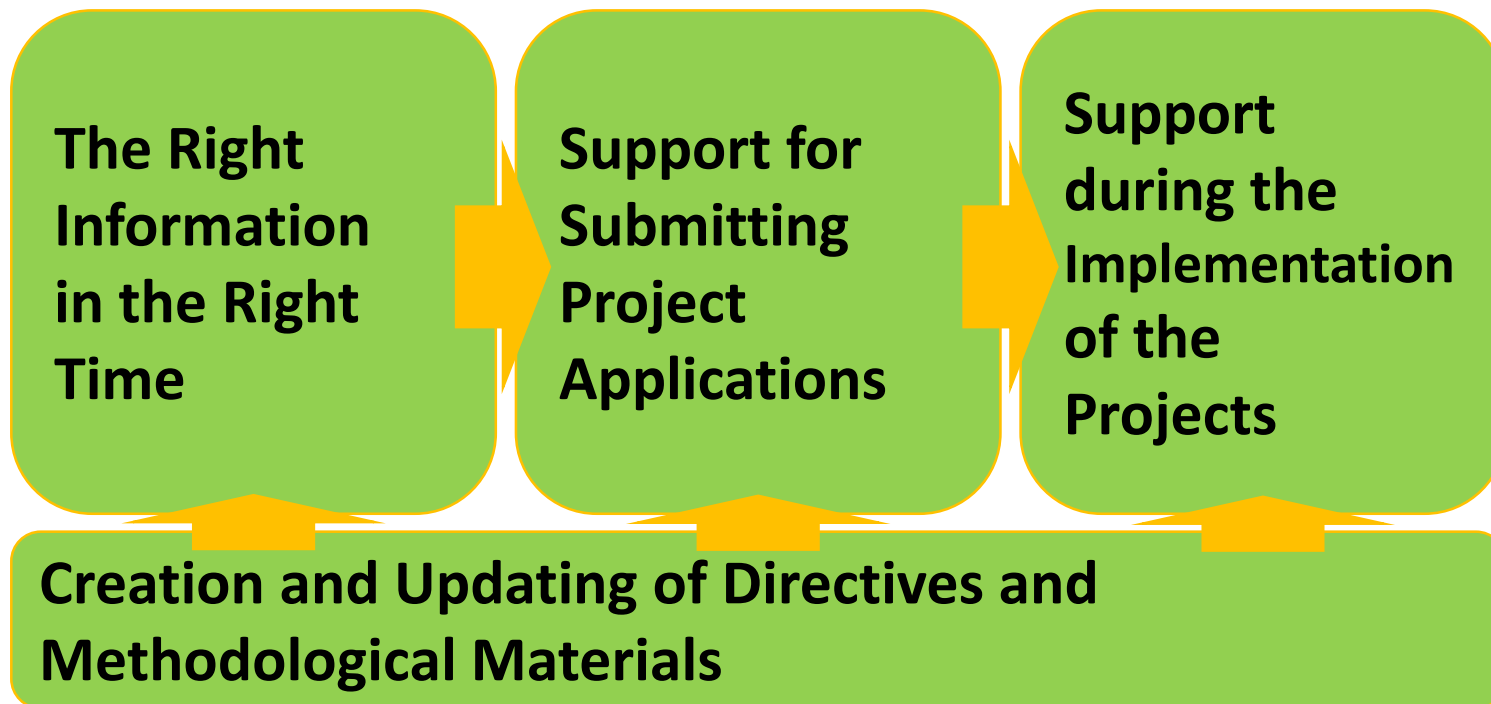


Czech University
of Life Sciences Prague

University full of life

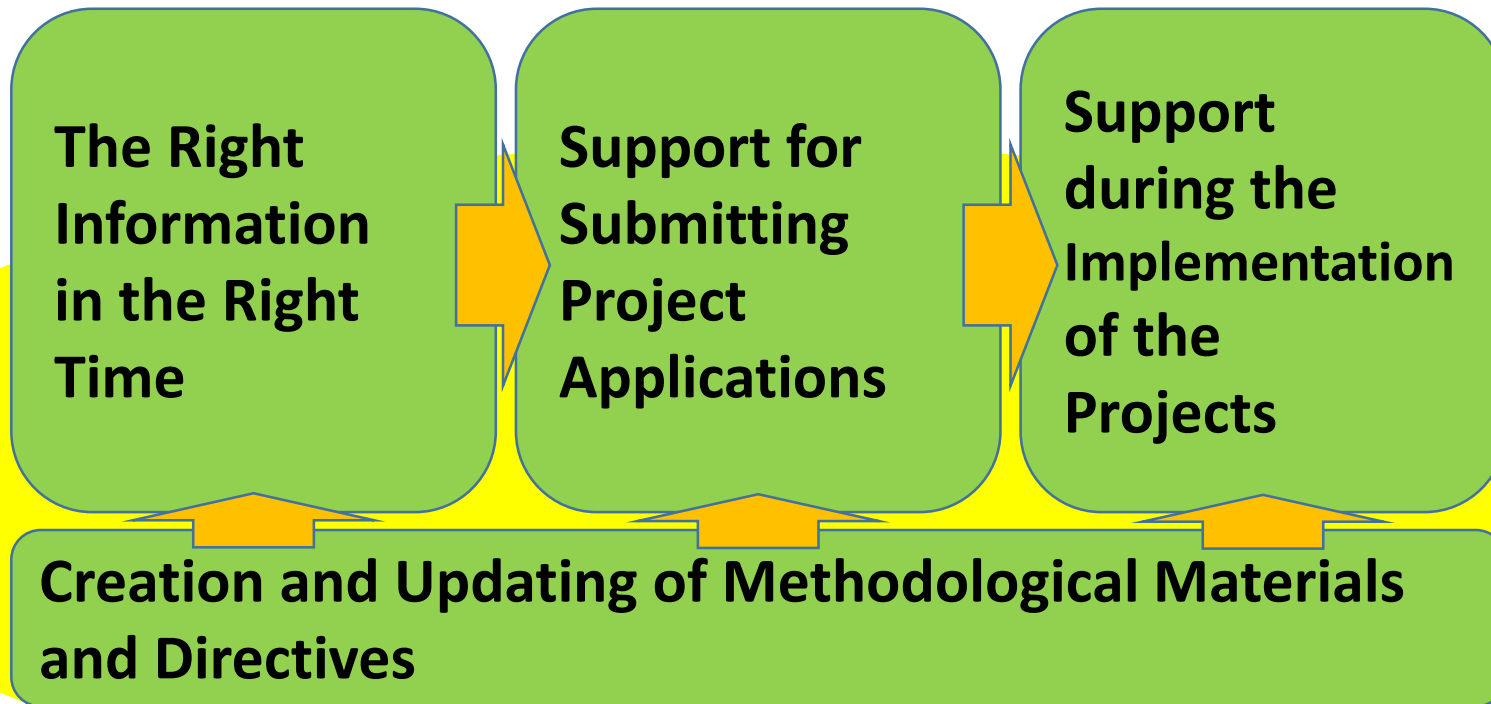
How we can support scientists and researchers?

How to Engage New Researchers into International Cooperation?



How we can support scientists and researchers?

How to Engage New Researchers into International Cooperation?



In cooperation with Technology centre CAS and ELLS universities



How we can support scientists and researchers?

Services for Project Applicants and Researchers

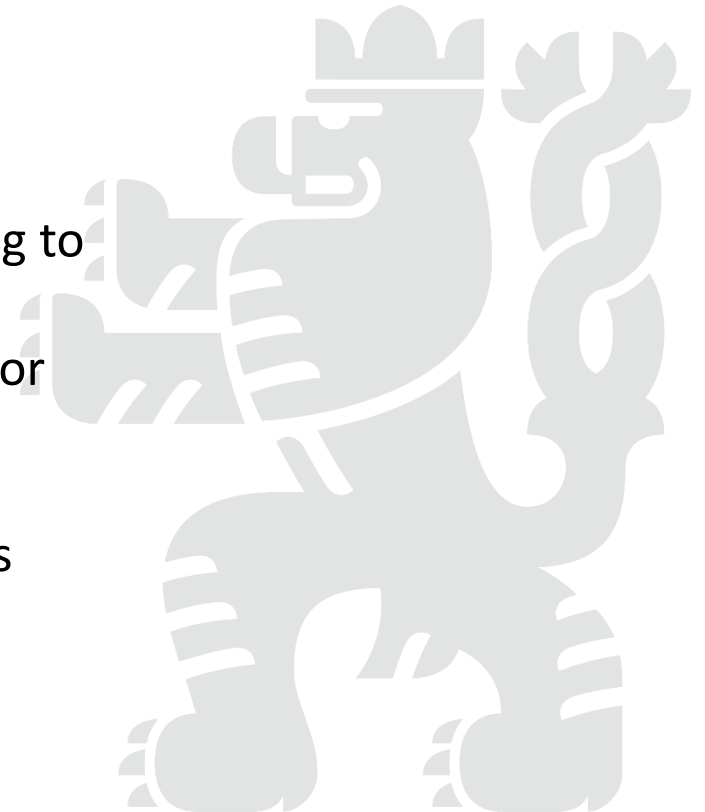
- **The Right Information in the Right Time**
 - General information about planned call via application Evidence projektu.
 - Regular information about the dates of current calls via the INTERNET (research.czu.cz), INTRANET (section News/Science, research and projects), application Evidence projektu and CZU NEWSLETTER, or through Project Centre representatives.
 - Information about brockering events, science weeks etc.
 - Internal seminars or invitation to the external seminars or workshops focused on actual calls.



How we can support scientists and researchers?

Services for Project Applicants and Researchers

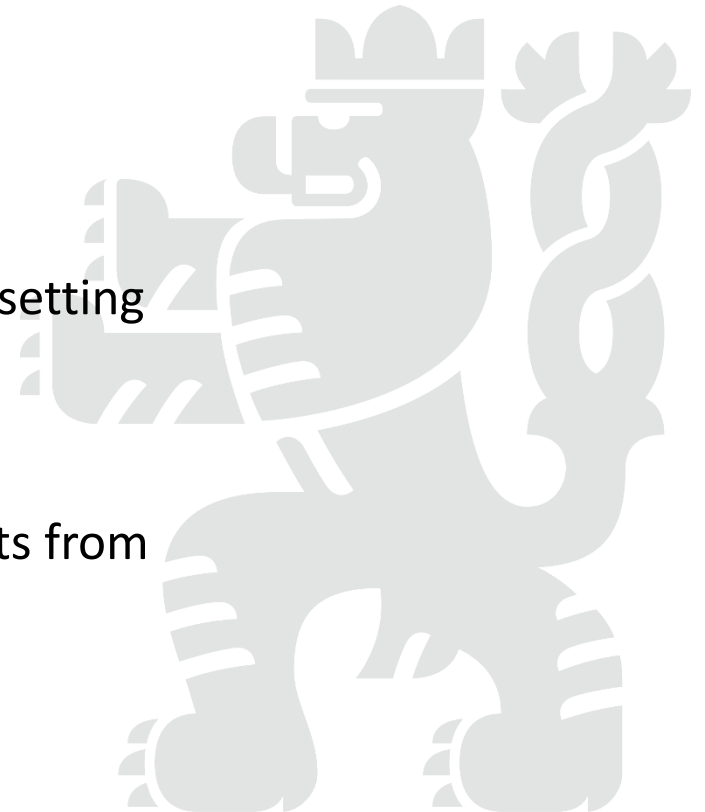
- **Support for Submitting Project Applications**
 - Providing pre-filled-in parts of the application forms relating to the university as a whole.
 - Securing recent mandatory attachments on behalf of CZU for a project application from a current document database.
 - Securing signatures by a statutory representative. Upon agreement, securing of submission of a grant application as required by individual providers.
 - Individual methodological support.



How we can support scientists and researchers?

Services for Project Applicants and Researchers

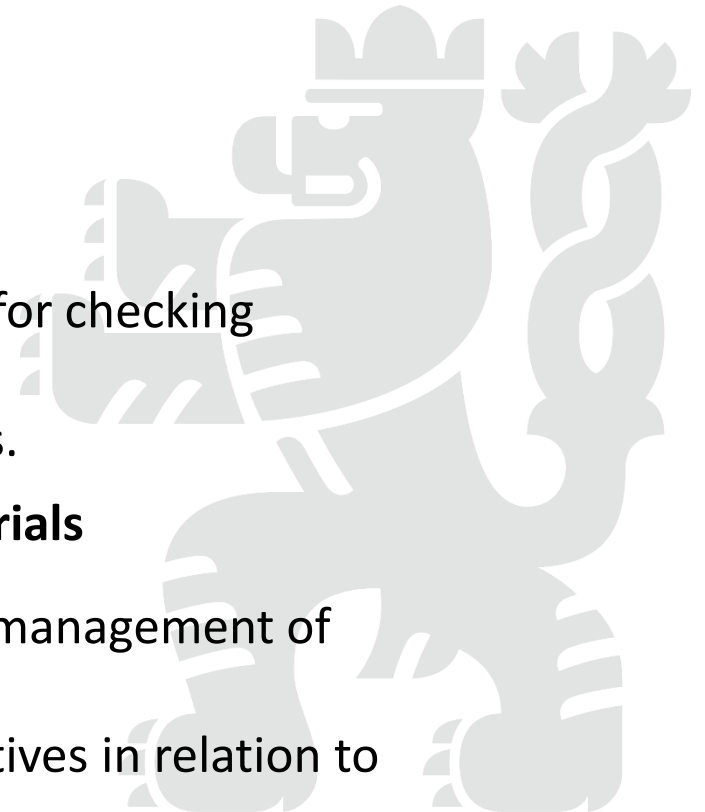
- **Support during the Project Approval Process**
 - Procedural support of securing the beginning of project implementation: legal advisory - check of the agreements, setting the financial parameters, personal costs.
- **Support during Submitting of Monitoring Reports**
 - Consultancy of financial reports, changes or special requests from the project coordinator / project officer.



How we can support scientists and researchers?

Services for Project Applicants and Researchers

- **Support during the Implementation of Inspections for Projects**
 - Organizational securing of the course of checks / audits.
 - Methodological support during preparation of documents for checking /audits on location
 - Support in case of deficiencies or formulation of objections.
- **Creation and Updating of Directives and Methodological Materials**
 - Preparation of methodological materials, e.g. for financial management of projects, esp. personal costs etc.
 - Collaboration in creating and updating the necessary directives in relation to statutory regulations and state administration bodies.

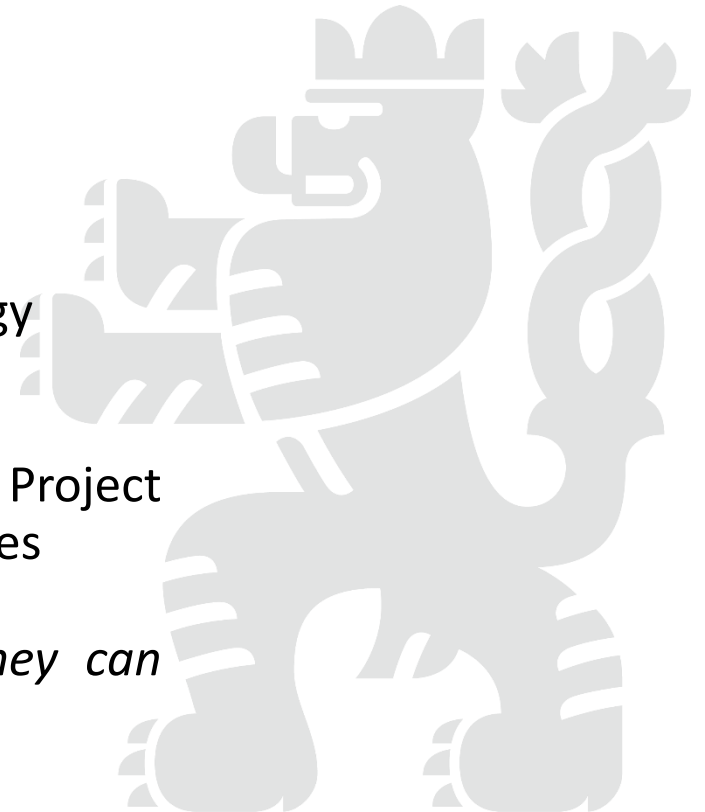


How we can support scientists and researchers?

In brief, we offer:

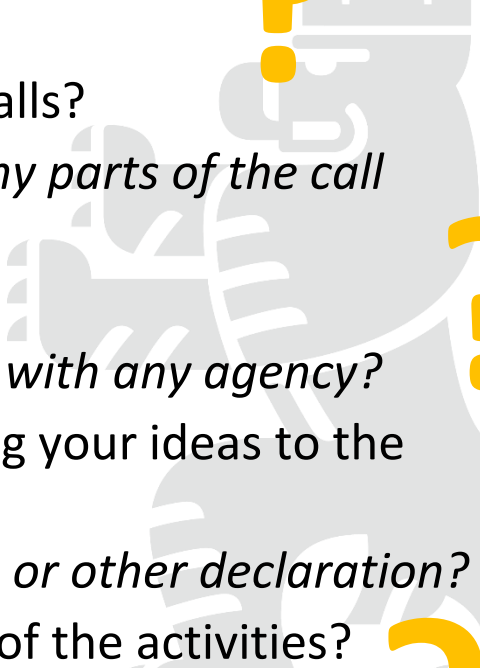
- **The right information in the right time.**
- **The individual approach** based on the experiences and broad knowledge of us and our colleagues (also from Technology Centre CAS and other Czech or ELLS universities)
- **Sharing experiences** among Department for Development and Project Management at the Rectorate and Project Centers at the faculties

We try to support the self confidence of the applicants that they can succeed



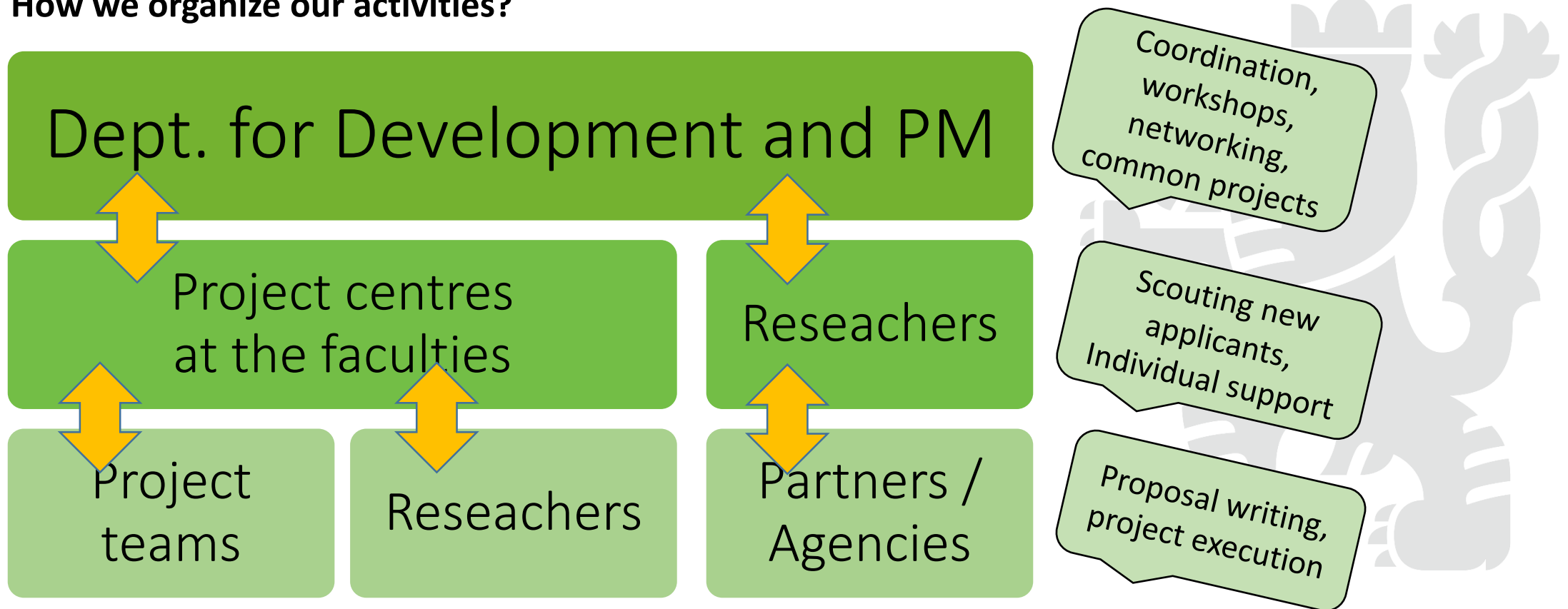
How we can support scientists and researchers?

We offer the individual approach: Do you want...? Or do you need...?

- 
- Explanation of the differences between internal and European calls?
 - *Recommendation of the potential call/topics? "Translation" of any parts of the call description? Successful project from the similar call?*
 - Contact the successful researcher or evaluator?
 - *Preparation of your proposal with our advisory or in cooperation with any agency?*
 - Consultancy of the budget and check your planned costs? Binding your ideas to the European strategies?
 - *Description of the Data management plan, Gender equality plan, or other declaration?*
 - Help with animating of the preparation team or with the design of the activities?

How we can support scientists and researchers?

How we organize our activities?



How we can support scientists and researchers?

How we cooperate with the Technology Centre and the other universities?

Technology Centre CAS

- Public seminars/ workshops
- Individual workshops
- Specific courses (ERC, PM)
- Common activities - NID
- Methodological support
- Useful contacts (succesfull reseachers, evaluators, potential partners)
- Information
- Publications
- Networking

Czech University of Life Sciences Prague

- Common workshops (Prague, Wien, Brussels, on-line)
- Common activities – position papers
- Useful contacts (succesfull reseachers, evaluators, potential partners)
- Information
- Networking

ELLS Universities

ICA, DRC, Agrinatura
CZELO



How we can support scientists and researchers?

Thank you for your attention

Josef Beranek,
beranek@rektorat.czu.cz

head of the Dept. for Development and Project Management

www.czu.cz/en



See you in Prague!



study.czu.cz
czu.cz/en



[czuprague](https://www.facebook.com/czuprague)



[czuprague](https://www.instagram.com/czuprague)



Czech University
of Life Sciences Prague