

Study in Småland

2010/2011

Linnæus University 
Sweden



Content

A new university, Stephen Hwang	3
A very special part of Sweden	4
Study at Linnaeus University	7
Studying abroad opens up new vistas	8
Student town by the sea	10
A living Campus	12
How to plan your course schedule	14
How to obtain a degree from Linnaeus University	16
Master programmes and disciplines	18
Addresses	20



A new university with international ambitions

Linnaeus University is a new university formed by the merging of Kalmar and Växjö Universities at the beginning of 2010. With more than 31 000 students the university is one of the larger ones in Sweden.

Linnaeus University has taken its name from Carl Linnaeus (1707-1778), the most famous and world-renowned Swedish scientist of the last few centuries. While the university is firmly rooted in the Småland region of southern Sweden where Linnaeus was born, our activities, like his, have no boundaries.

Our goal is to become a modern university, combining the highest possible quality in education and research with the demands and needs of both the surrounding community and our students. We believe strongly in linking education with research, as well as linking academic curiosity with applied knowledge.

Internationalisation is a central aspect of contemporary society, and Europe, through the European Union, is playing a key role in international affairs. The rapidly

growing emerging economies of Asia and elsewhere are also bringing an increasing influence to bear on Sweden and the rest of Europe. The international dimension is of the utmost importance in our efforts to become a cutting-edge university. Research at Linnaeus University is pursued in international competition. International teaching exchanges are increasing, as are other elements of internationalisation which our teachers bring with into the classroom.

At our university, you will find many interesting courses and programmes to choose from. I am convinced that in coming here, you will increase your appeal to future employers, learn about Swedish culture and society and, perhaps most importantly, grow as a person.

Once again, welcome to participate – together with more than 1,000 international students – in shaping the brand new Linnaeus University!

Stephen Hwang
Vice-Chancellor



A very special part of Sweden

Having chosen to study at Linnaeus University, you have also chosen to spend a period of your life in a unique part of Sweden. Our region is called Småland, and it is the birth place of IKEA, several tennis stars, world leading glass design and the king of the forest – the elk!

The 110 km between Kalmar and Växjö can be easily travelled by train, bus, or car. Kalmar is situated on the coast of the Baltic Sea, while Växjö is located in the middle of the hinterland, with just over an hour to the east, south, and west coasts. But don't worry – there is plenty of water close to Växjö too. Småland offers thousands of lakes, large and small, offering opportunities for both swimming and fishing.

Småland also has an enormous amount of forest, which everyone has the right to hike and move through, to pick

berries and mushrooms in, and much more. This right, called the Right of Common Access, is unique, and is much appreciated by both Swedes and our international guests.

The Greenest City in Europe

We hope and believe that the nature of Småland will appeal to you. It's true that our area is sometimes called "darkest Småland", because of the large forests here. At the same time, Småland and its forest offer you a great opportunity to experience virtually untouched nature.

We are proud of our Swedish summers, and hope that you will enjoy them as much as we do. If you are staying in Växjö, you will also stay in a city which has been declared "the Greenest City in Europe" because of its focus on environmentally sound solutions and the environmental programmes implemented.



Walk on the water – yes, of course!

It can get cold during the winter – temperatures dropping down to -10°C are not unusual. If it remains cold for a few weeks, the lakes freeze, and you can walk, skate, and ski on the ice – but remember to be careful while you are out there!

Business, culture and sport

The people of Småland have a reputation of being extremely entrepreneurial. It is not mere chance that IKEA first saw the light of day in Småland. The very first IKEA store was built in Älmhult, 60 km south of Växjö. On a more cultural level, children's author Astrid Lindgren's books about Pippi Longstocking, Emil of Lönneberga and Ronia the Robber's Daughter continue to fascinate children all over the world. Olympic and World heptathlon champion Carolina Klüft grew up in Växjö, as did tennis stars Mats Wilander and Stefan Edberg.

Say hello to an elk

There are wide ribbons of forest between Kalmar and Växjö. These forests are the home to plenty of animals, including roe deer, hare, wild boar, and elk. Elks fascinate most people, so much that a special "elk park" has been established between Kalmar and Växjö. The park gives you a chance to study these magnificent animals at close quarters.

Blow your own glass

The Kingdom of Crystal is located between Kalmar and Växjö. The Kingdom is an area consisting of a number of glassworks, many which have gained a very high international reputation, for example Kosta Boda and Orrefors. At the glassworks, you can follow the work of the master glass blowers up close. You can also try your own hand (or mouth) at the art of blowing glass.



INTERNATIONAL RELATIONS OFFICES

KALMAR

International Relations Office
Linnaeus University
SE-391 82 Kalmar, Sweden
Telephone: +46 772 28 80 00

VÄXJÖ

International Relations Office
Linnaeus University
SE-351 95 Växjö, Sweden
Telephone: +46 772 28 80 00

lnu.se

E-mail: inexchange@lnu.se



Academic Calendar

The Academic year is divided into two semesters:

AUTUMN

KALMAR: Exchange students should arrive in Kalmar 25-26 August, 2010. The orientation programme runs 27-28 August, 2010.

VÄXJÖ: Exchange students should arrive in Växjö on 24-26 August, 2010. The orientation programme runs 27-28 August, 2010.

The Autumn semester runs 30 August, 2010 - 16 January, 2011. Classes commence the first day of the semester.

There is no break between between the Autumn and the Spring Semesters. There is no official Christmas break, but classes are usually not scheduled 24 December - 6 January.

SPRING

KALMAR: Exchange students should arrive in Kalmar 12-13 January, 2011. The orientation programme runs 14-15 January, 2011.

VÄXJÖ: Exchange students should arrive in Växjö 12-13 January, 2011. The orientation programme runs 14-15 January, 2011.

The Spring semester runs 17 January - 5 June, 2011. Classes commence the first day of the semester.

Study at Linnaeus University

Linnaeus University is a major regional university in south-eastern Sweden, with main study sites located in Kalmar and Växjö. The university has 31,000 students, and is known for its strong international profile. Students and faculty can participate in international exchanges involving a large number of universities all over the world.

The university actively participates in exchange programs such as Nordplus, Erasmus, ISEP, and USAC, and also has a large number of bilateral exchange agreements. Each year approximately 500 students from Kalmar and Växjö study abroad, while more than 1,000 exchange students come from Africa, Asia, Australia, North America, Scandinavia, and other parts of Europe to study at Linnaeus University. The first programme offered in English was established more than two decades ago. Today, exchange students and international students, along with Swedish students, study in English and other languages in nearly every school at Linnaeus University.

Exchange students at Linnaeus University can study at both first and second cycles. Research and development

projects are undertaken in a variety of fields and usually include a significant international component.

Admission

Programmes and courses are open to qualified students nominated by their home university as exchange students. Exchange students pay tuition at their home university. Room and board are paid at Linnaeus University, unless otherwise stated.

How to apply

Exchange students are nominated by their home university. Once nominated, students are emailed information on how to access and log in to the web application. Complete applications should be submitted to Linnaeus University no later than 1 May, 2010 for the 2010 autumn semester and no later than 1 October, 2010 for the 2011 spring semester.

Linnaeus University cannot guarantee acceptance or accommodation for students submitting their applications after the deadlines. All student exchanges are to be coordinated through the International Relations Office at Linnaeus University.

Studying abroad opens up new vistas

Linnaeus University has a long experience of collaborating with institutes of higher education around the world. But international work involves more than just student exchange.

“Internationalisation is a mindset, an approach that is supposed to permeate everything we do,” says Emil Tyberg, International Coordinator at the School of Language and Literature.

”

Studying abroad opens
up new vistas

Emil Tyberg

Many of the staff at his department travel abroad to teach, and every effort is being made to intensify cooperation with a select range of universities. “It’s important, though, not to focus on colleges and universities in Anglo-Saxon countries alone but to establish partnerships in other regions as well, such as Africa and Asia,” he says. Increasing efforts are being made to bring together Swedish and foreign students in courses that permit such a blend.

The same approach is being adopted at Linnaeus School of Business and Economics, where Helena Forslund heads the Department of Logistics & Supply Chain Management. “Today, it’s more common for us to teach our Swedish students in English, which makes it easier for international



Emil Tyberg and Helena Forslund



students to join these courses. When you have students from different backgrounds, you get different angles and a wider perspective on what you're studying, which can be extremely useful," says Helena Forslund. "Having students from different cultures in the same group is interesting, fun and instructive," adds Emil Tyberg. "Where such encounters are not possible in a classroom framework, we look at other options. It may be enough, for instance, just to arrange a wine-and-cheese party together with the French students."

” I think it's fair to say that we're easily accessible

Helena Forslund

Generally speaking, Sweden is a country with few hierarchies, and Linnaeus University is no exception. The teachers are easy to get hold of, and often keep their doors open should anyone wish to ask about something. "I think it's fair to say that we're easily accessible," says Helena Forslund. "And we've worked with international students for so long that we're able to develop and adapt our courses to suit most people." Both feel, too, that studying in another country is an enriching experience on many different levels. "Studying abroad opens up new vistas," declares Emil Tyberg. "Among our Swedish students, I've noticed that those who spend a year of their study period abroad have matured five years by the time they come home," says Helena Forslund.



The student town by the sea

The university buildings in Kalmar are close to centre of the town, and the majority of students live centrally. Students and student activities are a natural part of the town.

Locating the university in the centre of Kalmar was a conscious move. Students go about their daily business in the town centre, filling it with the buzz of activity, and many students live in close proximity to university buildings.

In Kalmar, everything is close at hand. Within a five to ten minutes' walk, you will find just about everything you need – your school, your friends, the sea, the gym, or the town centre, Kvarnholmen.

The close proximity to the coast and the sea leaves its impression on life in Kalmar. Smaller beaches and places to swim are dotted around the town centre, and the nearby island of Öland offers top class beaches with miles of white sand. Being so close to the coast and sea has also left its mark on the range of degree programmes on offer and research activities being pursued in Kalmar.

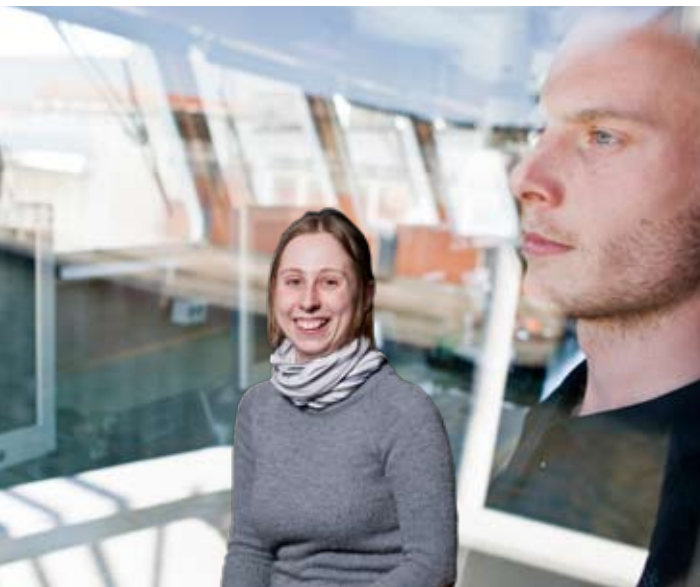
Internationally eminent research is carried out in the natural sciences, linked to the nearby Baltic Sea. Linnaeus University in Kalmar also hosts an internationally renowned maritime academy.

Kalmar

Kalmar is a town with a long history and many cosy backstreets, positively brimming with the ambience of a bygone age. Kalmar Castle and the town park are favourite haunts of many students. When the sun shines, the castle's moat and grounds are filled with students studying and soaking up the sun. Many people jog or walk in the area surrounding the castle, alongside the Kalmar Sound.

Everything is near at hand, and the short distances make the town perfect for sports and excursions. Kalmar has over the past few years undergone a major expansion in terms of retail outlets and commerce. New shopping centres have been created, and several new chains and stores have opened in the town.





Birthe Rancka

I had been to Sweden a lot, but never to Kalmar, says Birthe Rancka from Bremen in Germany. Back home she studies biology at the university, which was the reason Birthe chose to study marine biology in Kalmar. The course is taught in English, but after all her visits to Sweden, Birthe also speaks Swedish.

– Kalmar is a nice place. From the cafeteria, there's view of the Baltic Sea and Öland, the large island, where I have carried out field studies.

During the semester Birthe has spent in Kalmar, she has been very busy with her studies. Even so, she has had the time to enjoy herself, and she feels there are many events, trips, and excursions organised for exchange students. Being the fan of Sweden that she is, she might come back to do her master's, but right now Birthe thinks that it is great to have a degree from Linnaeus University.

– Being a biologist, it makes it extra special!

A living Campus

Campus Växjö is the natural meeting place for students in Växjö. You can find everything in one place while at the same time never being far away from the centre of town.

Växjö has a long tradition of education, and despite its campus location, the university is a natural part of the town of Växjö. Linnaeus University has close ties with the local business sector and is a major player in the development of the town. The business enterprise spirit permeating Växjö is well known.

In Växjö itself, there are some 7,000 businesses, mainly within the IT and service sectors, manufacturing industry, furniture, forestry, and wood. This can provide you with the perfect opportunity if you are looking for an internship, work experience, or an independent project involving a local business for your degree.

Everything on campus is within five minutes' walking distance – student accommodation, classrooms, the library, restaurants and pubs, lakes and other leisure facilities.

Diego Andrés Labougle Martinez

I'm interested in politics and fascinated by the Swedish political system, so Linnaeus University attracted me. I wanted to go to a large university in a small town, because I come from a small university in Mexico City. It's just so different!

I study political science, and I'm aiming at working in local government administration. I'm very satisfied with the content of my courses in Växjö, and, above all, with the opportunity to get to know both people from Sweden and other countries.

” I will remember my time in Växjö as instructive, stimulating, and lots of fun. And I will never forget the campus and my friends there!

The campus is full of life and energy and is a natural meeting place for all students and interests.

There are abundant opportunities in Växjö for leisure activities. The town is surrounded by countryside, forests and water. The Växjö lake, close to both campus and the town centre, is a natural place for walking and jogging.

Those interested in music can listen to both established and upcoming bands at one of Växjö's many music venues. If you are a musician yourself, there are a number of studios, stages, and courses at the university. The arts are also flourishing, with an abundance of small galleries, with Växjö Art Gallery playing a leading role. Växjö is located close to a region of Sweden famous for its production of glass and furniture. Glass and furniture outlets are also well worth a visit especially if you are interested in art, design and handicrafts.





On the outskirts of Växjö, embedded in greenery and surrounded by lakes, lies the university campus. Here you can find most of the things a student needs: close proximity to teaching premises, leisure-time activities, and not least – friends. There are also a number of shops in the campus area, and even more just outside.



How to plan your course schedule

At Swedish universities, students usually study only one or two courses intensively at a time, followed by an exam for each course (consecutive scheduling), instead of studying several different courses simultaneously, with a midterm and a final exam for each course at the end of the semester (parallel scheduling).

The duration and extent of programmes and courses are expressed through the credit system used. One semester (20 weeks) of full-time studies corresponds to 30 credits or 30 ECTS/approximately 15 US semester credits. Freestanding courses and modules are generally 7.5 credits each and usually run for five weeks. Full-time studies requires 40 hours of studies (including class time and own studies) per week.



Marco Chiusaroci

The teaching here feels much more relaxed and informal.

I had never been to Scandinavia before, but when I was 13, I did a school project where we were asked to go on an imaginary journey for two weeks and then give an account of the different places we had visited to the teacher. As I did my imaginary trip to Sweden, I thought that I must do it in reality, too, says Marco Chiusaroci, who is from Italy, but is studying archaeology in the UK.

The university in Sheffield, where Marco normally studies, has some 50,000 students, and the classes are much bigger than in Kalmar.

Marco has half his studies left when he returns to Sheffield, but he is definitely planning to return to Sweden in the future – at least to pay a visit.

– I have made some really good Swedish friends here, and I definitely want to visit Sweden again.

Programmes and courses

All exchange students are required to be full-time students (enrolled in at least 30 credits per semester) during their stay at Linnaeus University. Choose between applying for one full-semester 30-credit course or combine several freestanding courses.

A full-semester course consists of one semester (20 weeks) of full-time studies, divided into several modules. If you

choose a full-semester course, you are required to follow the course and the modules exactly as listed in the course outline. Individual modules from different full-semester courses or programmes cannot be combined.

Programmes and courses are offered both at first (undergraduate) and second (master) cycle.

Module: several modules make up a full-semester course. Modules cannot be chosen individually.

Programme: a full-year programme at second cycle.

Freestanding course: courses which can be combined to make up a full-time study load of 30 credits. Freestanding courses are usually 7.5 credits, but a small number of courses are 5 or 15 credits.

Full-semester 30 credit course: several modules combined making up 30 credits per semester.

Module 1	Module 2	Module 3	Module 4
Conflict and Conflict Resolution, 7.5 credits	Development Economy, 7.5 credits	Media and Our World View, 7.5 credits	Independent Work, 7.5 credits
Introductory Swedish for Exchange Students (non-credit course)			
20 weeks			

Example: A full-semester course combined with the non-credit Swedish course. The example above is the full-semester course 1FU200 Peace and Development Studies

1VÅ210	1FV611	4EN004
Health Care in an Intercultural Perspective, 7.5 credits, full-time	Focus on Scandinavian and Swedish Film, 7.5 credits, full-time	Cultural Studies and English 7.5 credits, full-time
1SV731 Beginners' Swedish for Exchange Students, 7.5 credits, part-time		
20 weeks		

Example: Combining freestanding courses can look like the example above. The first three (full-time) courses run over 5 weeks, while the (part-time) course runs over 15 weeks.

Full-time studies

One semester: 20 weeks

Credits per semester: 30 credits (1 credit equals 1 ECTS or approximately 0.75 US credits)

Credits per week: 1 week of full-time studies equals 1.5 credits

Work load: 40 hours per week including lectures, group work, seminars and independent studies

Part-time studies

Some courses are offered as part-time courses. A full-time, 7.5-credit course takes 5 weeks to complete, while a part-time course might instead run over 10 weeks.

Overlapping classes

Classes might overlap for those students who make up their curriculum by freestanding courses. However, in most cases it is possible to take two courses concurrently. You should compare the schedules of each course you are taking at the beginning of the semester to determine whether classes overlap.

How to obtain a degree from Linnaeus University



Exams take place after each freestanding course or module. If taking a full-semester course, you will receive a cumulative grade for the course as well as individual grades for each module.

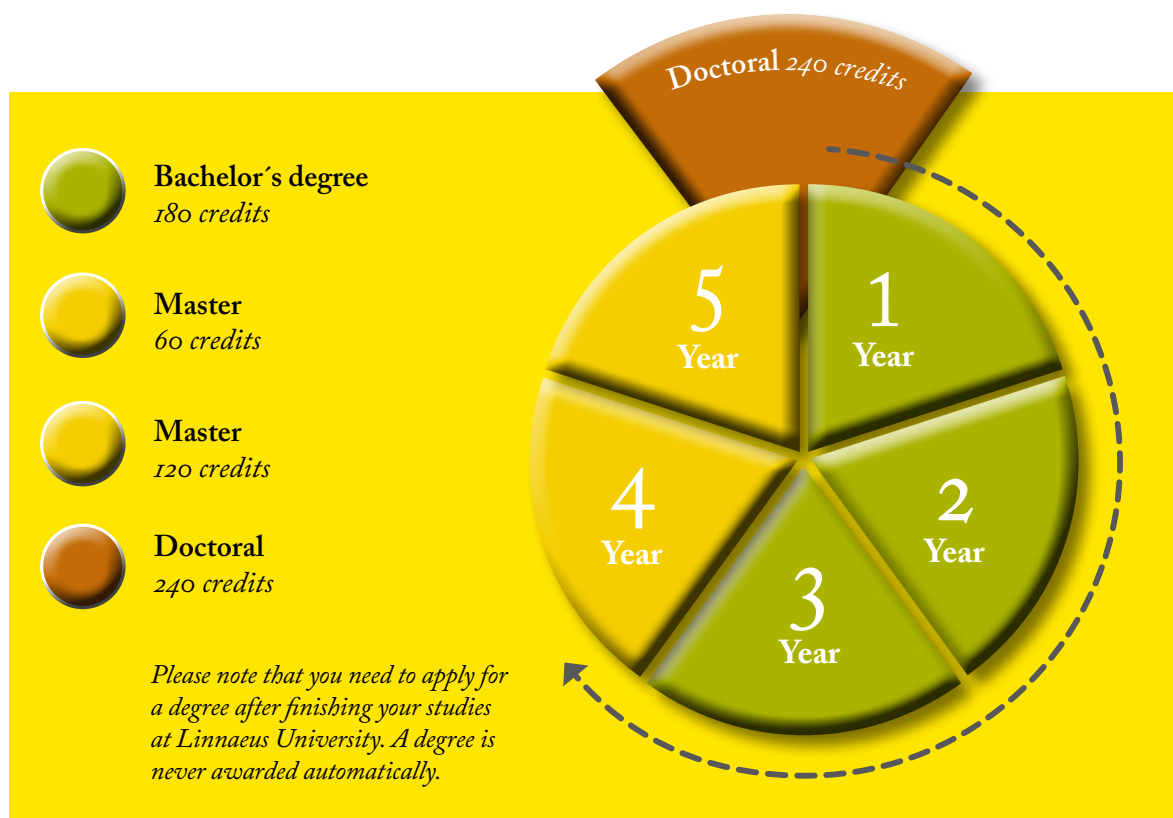
If you fail an exam, it is possible to re-sit the exam later in the semester, without penalty. Only successfully completed courses or modules are recorded on your transcript. This means your transcript will not show if you have failed an exam or course.

There are two success grades awarded in the Swedish university system: »Pass« and »Pass with Distinction«. ECTS grades can be provided if you let your teacher know at the beginning of the course that you want to be graded according to the ECTS scale.

As an exchange student, you can obtain a degree from Linnaeus University by following the required study plan for a particular degree. You can also combine credits from your home university with credits from Linnaeus University to meet degree requirements.

Exchange students can obtain degrees in various disciplines and in both first (undergraduate) and second (postgraduate) cycles.





First cycle, Bachelor's degree (180 credits)

A Swedish Bachelor's degree requires studies of at least 180 credits at first cycle, of which 90 credits must be in the main field of study. The main field of study must include an independent project of at least 15 credits.

Second cycle, Master (60 credits)

A Master (60 credits) is awarded after completing 60 credits at second cycle, of which 30 credits must be in the main field of study. The main field of study must include an independent project of at least 15 credits. A Bachelor's degree or the equivalent is required for admission to a Master programme.

Second cycle, Master (120 credits)

A Master (120 credits) is awarded after completing 120 credits at second cycle, of which 60 credits must be in the main field of study. The main field of study must also

include one independent project of at least 30 credits, or two independent projects of at least 15 credits each. A Bachelor's degree or the equivalent is required for admission to a Master programme.

Third cycle, Doctoral (240 credits)

A doctorate degree is awarded after completing 240 credits at third cycle, of which a minimum of 120 credits consists of a doctoral project. A doctoral programme usually lasts for four years.

It is also possible to enrol in a two-year licentiate degree programme. A licentiate degree is awarded after completing 120 credits at third cycle, of which a minimum of 60 credits consists of an independent project. All third cycle programmes include course work at the third cycle, an independent project, and research collaboration with supervisors.

Master programmes and disciplines

Linnaeus University offers courses and programmes in English and other languages in the following disciplines. Please visit the Linnaeus University website for detailed information on the courses and Master programmes offered for exchange students: www.lnu.se

Courses taught in English and other languages are offered in the following subject areas

Archaeology
Bioenergy Technology
Biology
Business Administration
Chemical Engineering
Civil Engineering
Comparative Literature
Computer Science
Design
Economics
Electrical Engineering
English
Film Studies

Forest and Wood Technology
German
Health Care Science
History
Informatics
Journalism
Legal Science
Mathematics
Mechanical Engineering
Media and Communications
Media Technology
Music and Event Management
Peace and Development Studies

Pedagogy
Physics
Political Science
Psychology
Social Work
Sociology
Spanish
Swedish Language
Technology
Total Quality Maintenance (Terotechnology)
Tourism Studies





Timo Vikiö

I come from a small place in the south of Finland, and I applied to go to Växjö for several reasons. Amongst other things, I wanted to improve my Swedish. Swedish is a compulsory, but not particularly popular, subject in Finnish primary and secondary schools. Now I have the opportunity to learn the language properly.

During my stay at Linnaeus University, I'm studying Swedish and digital image

management. The studies are very demanding, but rewarding, and the teachers are very competent.

I find life on campus absolutely fantastic. I have made lots of new friends, and I find it easier to live as a gay person in a city like Växjö, than where I come from. I'm planning to come back to Växjö next semester to study graphic design.



James Batson

James Batson, who is studying archaeology at university in Sheffield in the UK, really wanted to come to Sweden as he had never been to the country before, but had heard a lot about it. In order to continue studying his subject he had to choose between Kalmar and Umeå, in the north of Sweden.

– It wasn't a difficult choice. From Kalmar you can easily travel to Stockholm and Copenhagen by train and we have taken the opportunity to

travel around during the term here.

For international students several trips are organised, not just within Sweden, but also to neighbouring countries. James has visited Norway, Denmark and Estonia. But he has also managed to make the best of what Kalmar has to offer.

– It's a pretty town with the castle and the sea. Everyone is really nice and there's a lot to do.





Close to everything

Kalmar and Vaxjö are easily reached by car, bus, train or plane, and it is possible to fly direct from Stockholm to both Kalmar and Vaxjö.

From Smaland Airport in Vaxjö it is possible to fly to Düsseldorf in Germany and in the summer season also to Alicante in Spain (April-October).

There are direct train connections with Copenhagen and Copenhagen Airport (Kastrup) several times a day.

Normal rail travel times to Kalmar and (Vaxjö):

Copenhagen 3.5 hr (2.5 hrs)
Stockholm 3.5 hr (4.5 hrs)
Malmö 2.5 hr (1.5 hrs)
Gothenburg 4 hr (3 hrs)

Linnaeus University
International Relations Office
391 82 Kalmar

Linnaeus University
International Relations Office
351 95 Vaxjö

E-mail: inexchange@lnu.se

Lnu.se