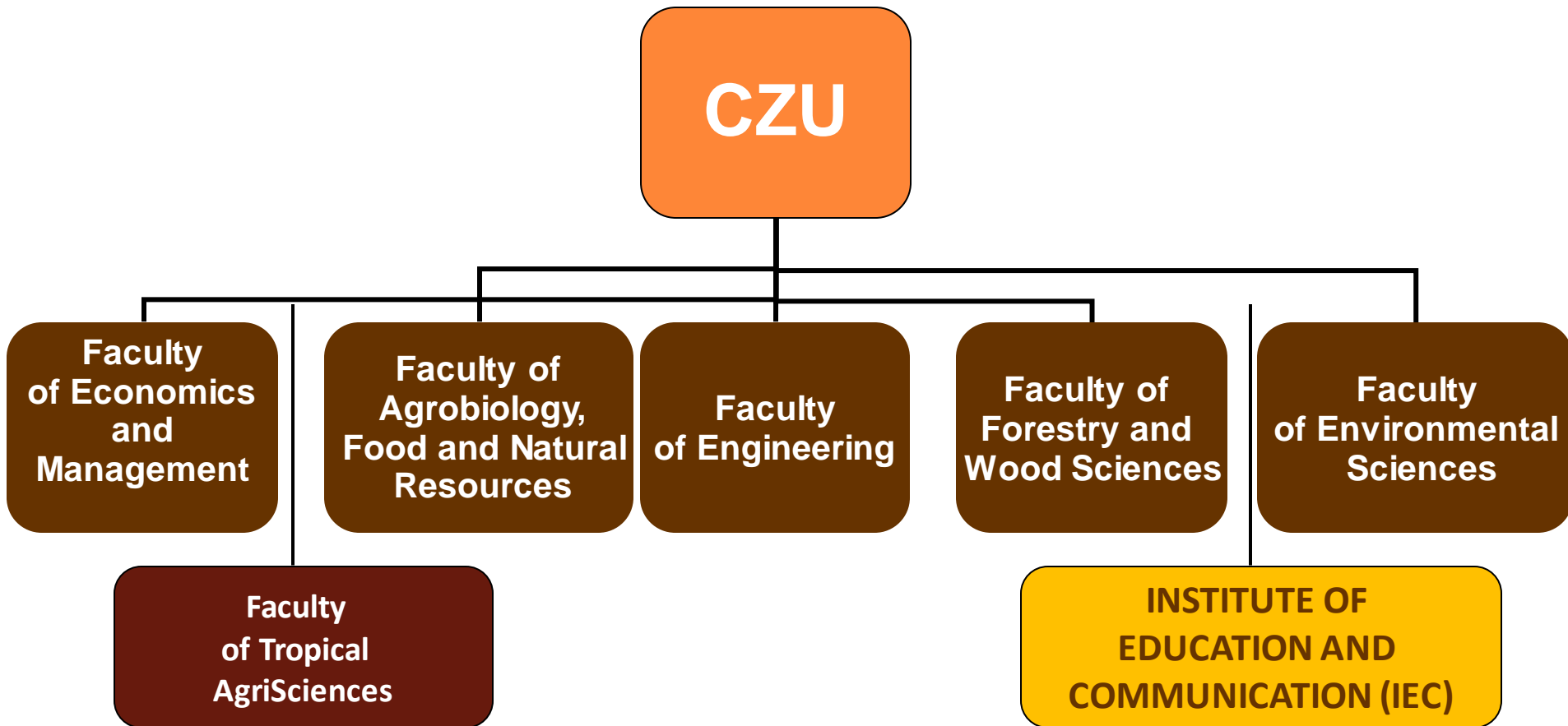


# Czech University of Life Sciences Prague



**INSTITUTE OF EDUCATION AND COMMUNICATION**

# CZECH UNIVERSITY OF LIFE SCIENCES PRAGUE

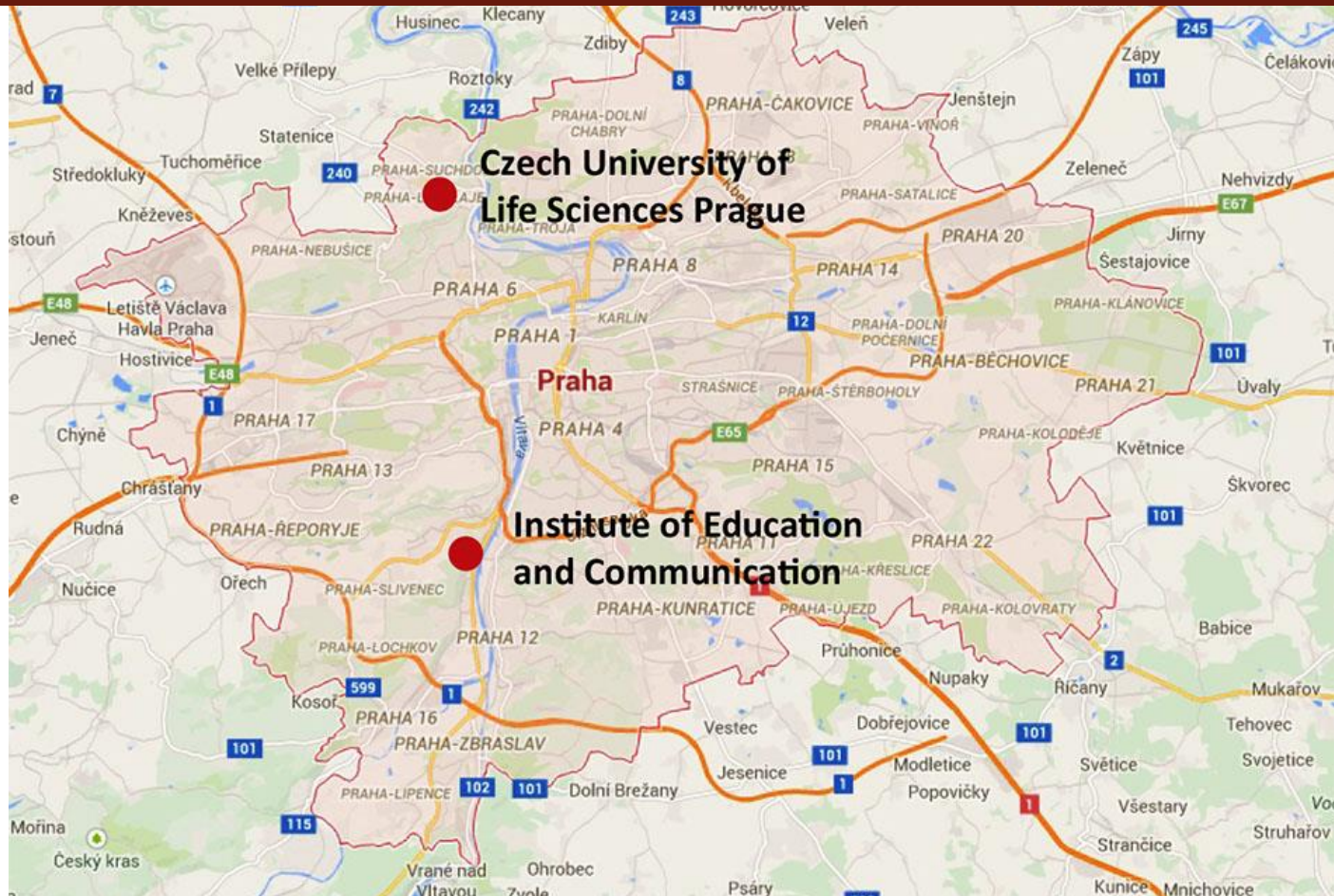


# Institute of Education and Communication (IEC)

- Seated in Malá Chuchle, the venue consists of two buildings surrounded by a park and city forest area



# INSTITUTE OF EDUCATION AND COMMUNICATION



# Mission of IEC (selection of aims)

- Training in two main study branches (bachelor degree level): the teaching of vocational subjects, career guidance, and education
- Courses in other pedagogical domains, mostly training of didactical and presentational skills for doctoral students, for beginning researchers and also all academics (development of skills useful for quality university instruction)
- Internal evaluation of all levels of study programs across all university level
- Guidance and counseling services

# Facilities and equipment

- Situated in Malá Chuchle, Institute occupies a historical building complex
- Modernized classrooms with flexible spaces are suitable for both lecturing and small group work including modern teaching aids and technologies
- Library and facilities support students' work and learning activities



# Classroom at IEC



# Staff and human resources

- IEC team is characterized by the composition of both experienced researchers and lecturers, and also with colleagues at the beginning of their career
- Professional background of staff covers expert knowledge in educational science, didactics of vocational subjects, educational psychology, and counseling



# INTERNATIONAL PROJECTS



# SUMMER SCHOOL FOR INCOMING STUDENTS





